

Notes

Hermann Gage = 7.0 at time of collection 20 November 2020

Gage\_L

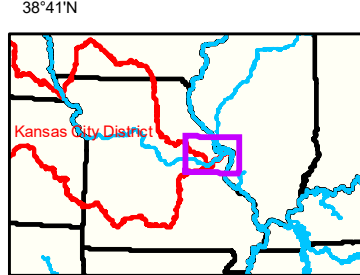
Source: Esri, DigitalGlobe, GeoEye, Earthstar Geographics, CNES/Airbus DS, USDA, USGS, AeroGRID, IGN, and the GIS User Community



**DISCLAIMER:** The U.S. Army Corps of Engineers provides this information for informational purposes only. It is not intended for use in any legal proceeding or as a basis for any claim. The Corps makes no warranty, express or implied, regarding the accuracy, completeness, or reliability of the information. The information is provided as is, with no guarantee of fitness for any particular purpose. The user assumes all liability for any use of this information.

KANSAS CITY DISTRICT MISSOURI RIVER AREA OFFICE	
Submitted By:	MRAO
Reviewed By:	MRAO
Checked By:	MRAO

**Survey Information**  
 MO\_01\_LMR  
 MO\_01\_LMR\_20201120\_CS\_90\_5\_92\_0\_SORT  
 20 November 2020



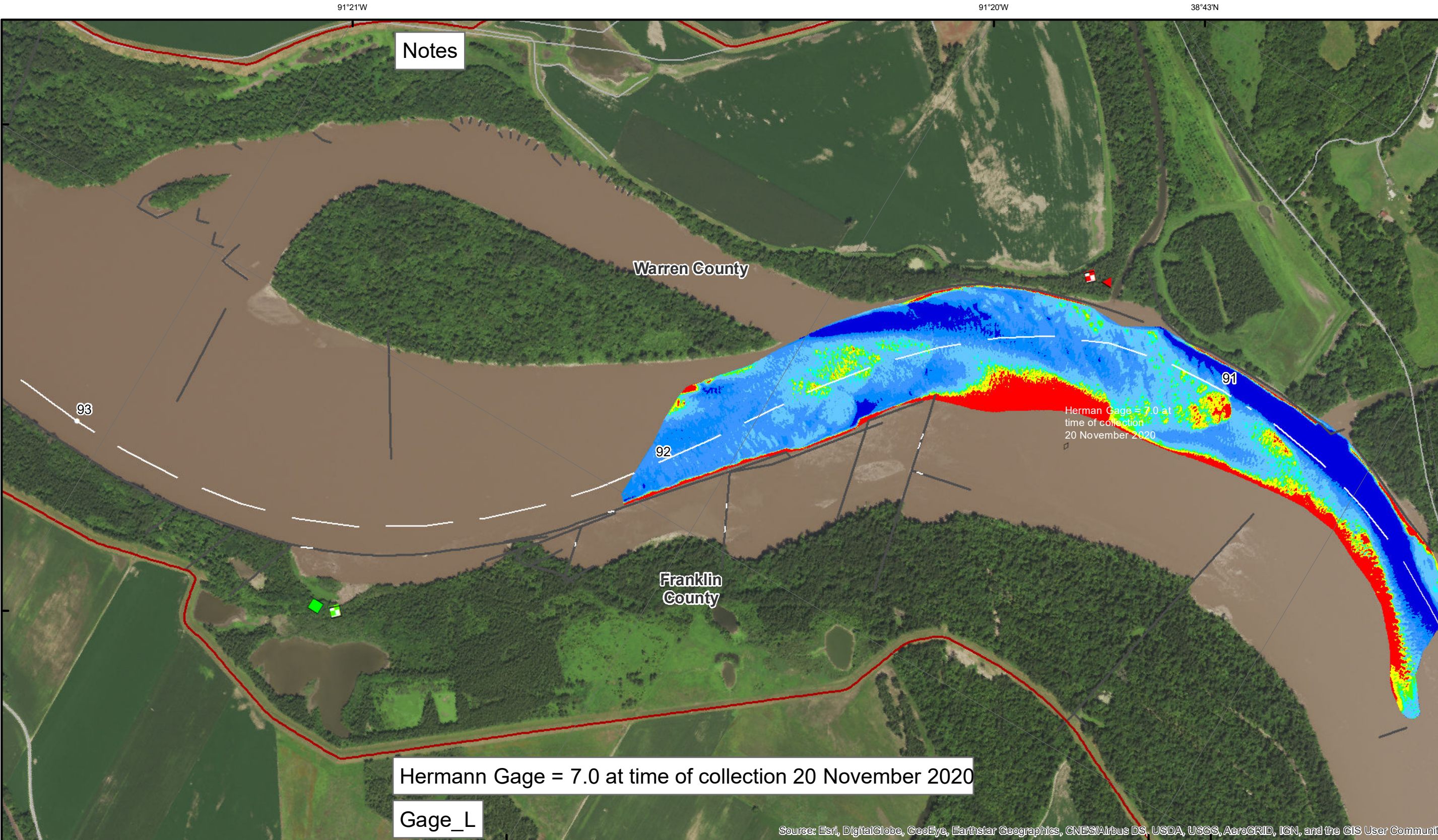
**LEGEND**

			Green Passing		Green		Green CAN
			Green Crossing		Red		Red NUN
			Red Crossing		Junction		
			River Mile				
			Sailing Line				
			BSNP Structure				
			Levee				

**Scale:** 0 312.5 625 937.5 1,250 2,500 Feet

**NOTES:**  
 Horizontal Coordinate System: World Geodetic System of 1984 (WGS84), projected to the Universal Transverse Mercator (UTM) Zone 15 North. Distance units in U.S. Survey Feet.  
 Vertical Datum: Soundings are shown in feet and indicated depths are referenced to water surface at time of collection.  
 The information depicted on this map represents the results of a survey conducted on the date indicated and can only be considered to represent the general condition existing at that time.  
 The location of navigation aids are based on and provided by the U.S. Coast Guard.

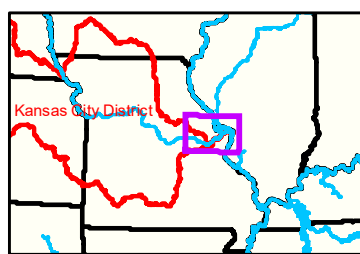
**Sheet Number**  
 41 of 46



**DISCLAIMER:** The U.S. Army Corps of Engineers provides this information as a service to the public. It is not intended to be used for any purpose other than that for which it was prepared. The Corps makes no warranty, expressed or implied, for the accuracy, reliability, or completeness of the information. The user assumes all liability for any use of the information. The U.S. Army Corps of Engineers is not responsible for any damage or loss resulting from the use of this information. The U.S. Army Corps of Engineers is not responsible for any damage or loss resulting from the use of this information.

KANSAS CITY DISTRICT MISSOURI RIVER AREA OFFICE	
Submitted By:	MIRAO
Reviewed By:	MIRAO
Checked By:	MIRAO

**Survey Information**  
MO\_01\_LMR  
MO\_01\_LMR\_20201120\_CS\_90\_5\_92\_0\_SORT  
20 November 2020



91°20'W 91°19'W 38°41'N

		<b>LEGEND</b>		Green Passing		Green		Green CAN	
				Red Passing			Red		Red NUN
				Green Crossing			Junction		
				Red Crossing					

0 312.5 625 937.5 1,250 2,500 Feet

**NOTES:**  
Horizontal Coordinate System: World Geodetic System of 1984 (WGS84), projected to the Universal Transverse Mercator (UTM) Zone 15 North. Distance units in U.S. Survey Feet.  
Vertical Datum: Soundings are shown in feet and indicated depths are referenced to water surface at time of collection.  
The information depicted on this map represents the results of a survey conducted on the date indicated and can only be considered to represent the general condition existing at that time.  
The location of navigation aids are based on and provided by the U.S. Coast Guard.

**Sheet Number**  
42 of 46